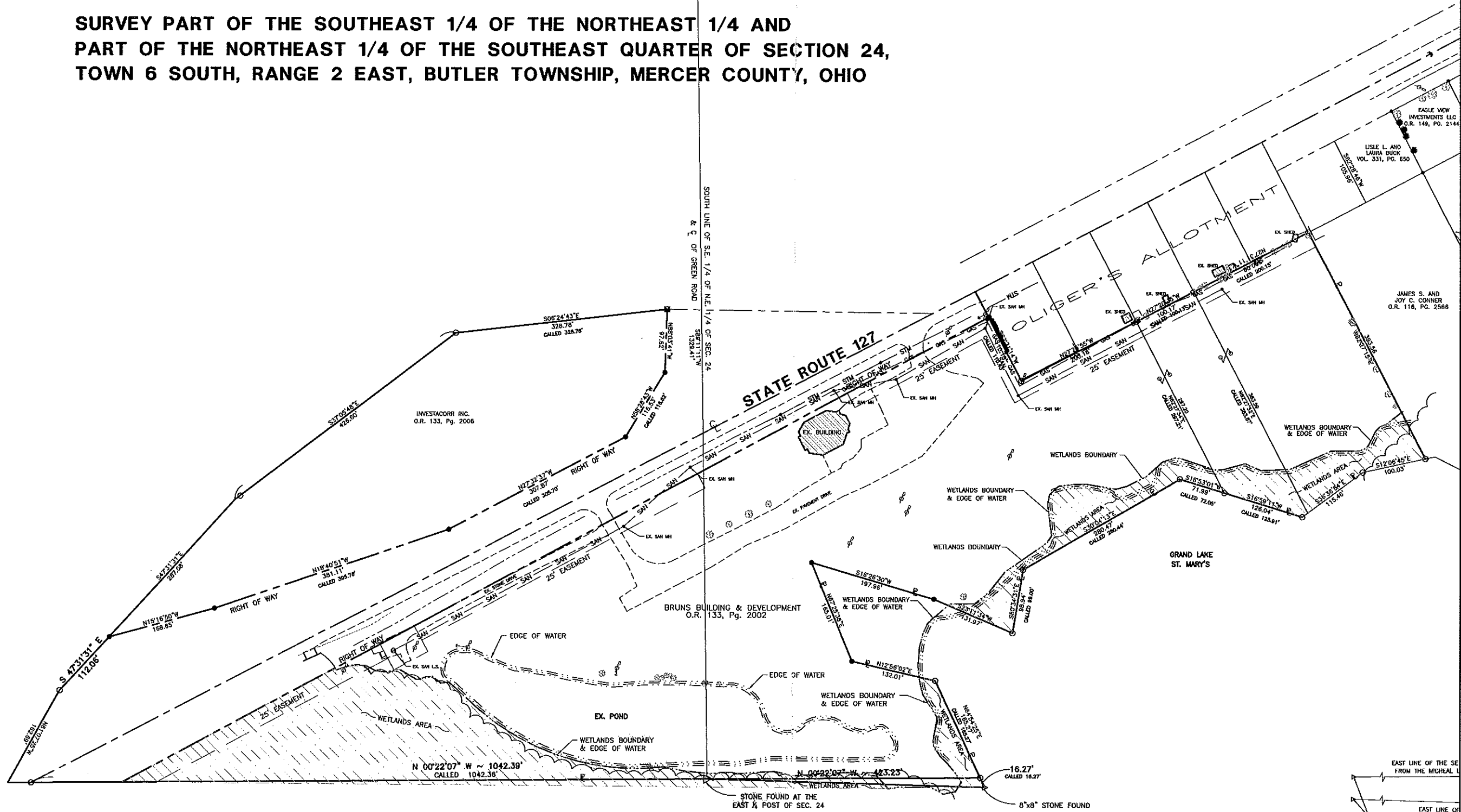


**SURVEY PART OF THE SOUTHEAST 1/4 OF THE NORTHEAST 1/4 AND
PART OF THE NORTHEAST 1/4 OF THE SOUTHEAST QUARTER OF SECTION 24,
TOWN 6 SOUTH, RANGE 2 EAST, BUTLER TOWNSHIP, MERCER COUNTY, OHIO**



SCALE: 1"=80'

LEGEND

- △ Stone Found
- Iron Pin Found
- Iron Pin Set
- ⊙ P.K. Nail Set
- ⊠ P.K. Nail Found

COPYRIGHT 2003 BY FANNING/HOWEY ASSOCIATES, INC.

**SURVEY OF
SOUTHBAY MOTEL
MERCER COUNTY, OHIO**

Fanning/Howey
Civil Engineering Division
Engineers Surveyors Consultants
1200 IRMSCHER BOULEVARD, CELINA, OHIO 45822
PH: (419) 586-2292 FAX: (419) 586-3393

| | | |
|----------------------|-----------------|-----------------------|
| WETLANDS AREA | DRAWN BY: RAB | COMPL. NO.: 202839.01 |
| | CHECKED BY: JCE | DATE: JUNE 3, 2003 |
| REVISIONS NO. DATE | | 1/1 |