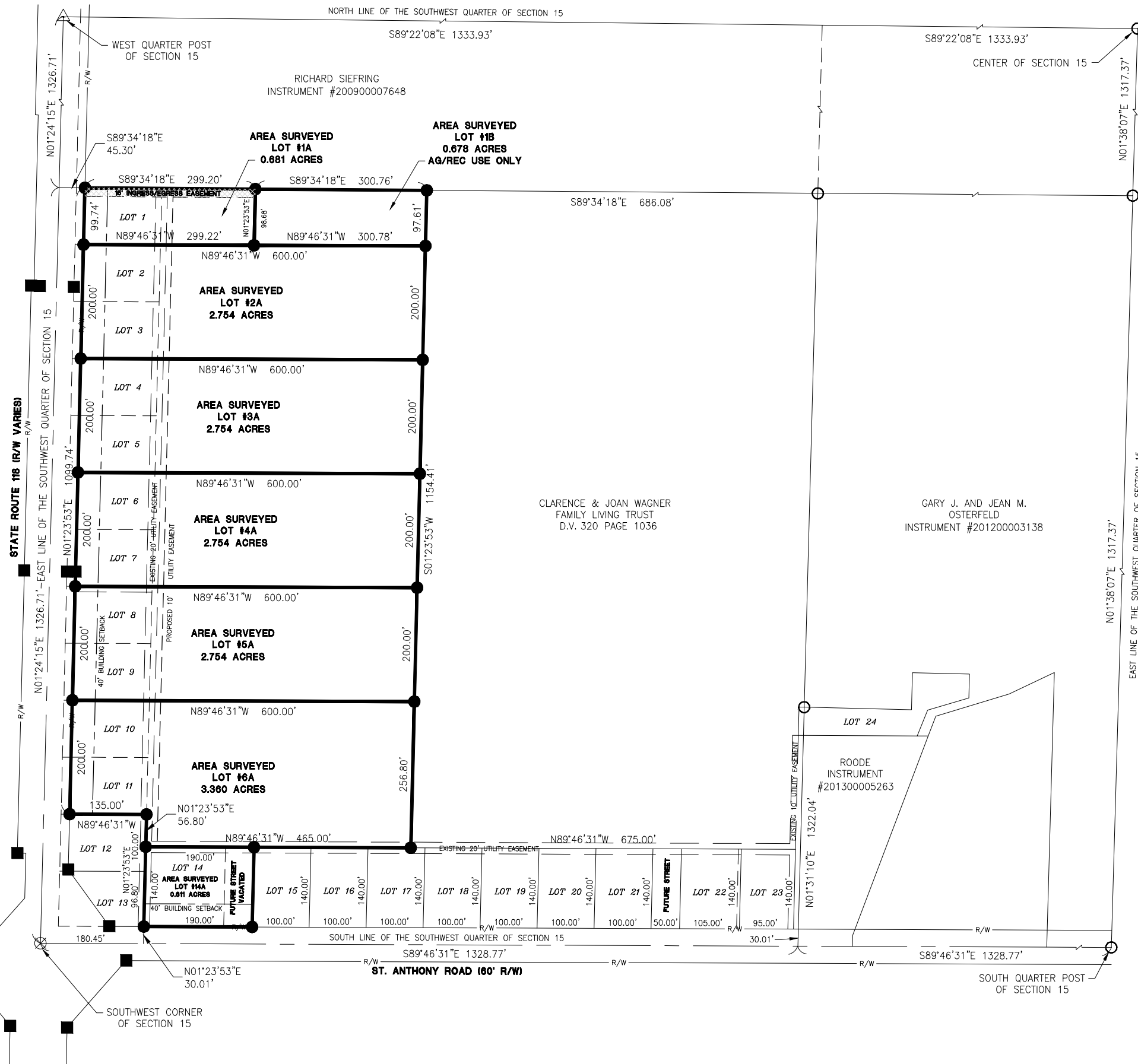


REPLAT OF LOTS #1-11 & #14 OF WAGNER SUBDIVISION

BEING ALL OF LOTS #1-11 & #14 OF WAGNER SUBDIVISION AS RECORDED IN PLAT CABINET 9, PAGE 52, IN THE SOUTHWEST QUARTER OF SECTION 15, TOWN 6 SOUTH, RANGE 2 EAST, BUTLER TOWNSHIP, MERCER COUNTY, OHIO

NUMBER OF LOTS: 8
 TOTAL AREA OF PLAT: 16.346 ACRES
 ZONING: R-1

EASEMENTS AND FRONT BUILDING LINES AS SHOWN ON THE PLAT.



REFERENCES

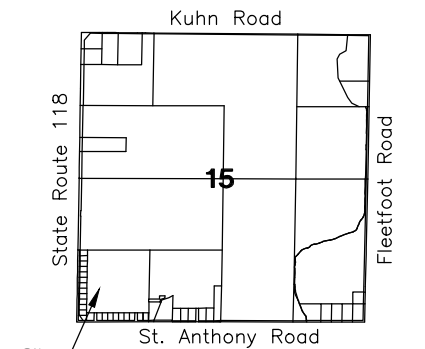
State Highway Right of Way Plans - 1968.
 Wagner Subdivision - Plat Book 9 Page 52.
 Homan Survey by James W. Geeslin P.S #7764 in May of 2012.
 Mercer County Local Coordinate Datum.
 All deeds on Record

NOTES

Lot #1B is designated "AG/REC USE ONLY".
 Lots #1-11 and 14 is to be vacated. The state route 118 right of way centerline bearing is N01°23'53"E and the section line bearing along state route 118 is N01°24'15"E.

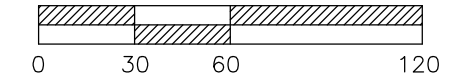
LEGEND

- ⊗ RR Spike Found
- Iron Pin Found
- Iron Pin Set
- ⊙ Mag Nail Set
- ⊗ Mag Nail Found
- Con Mon. Found
- △ Monument Box Found

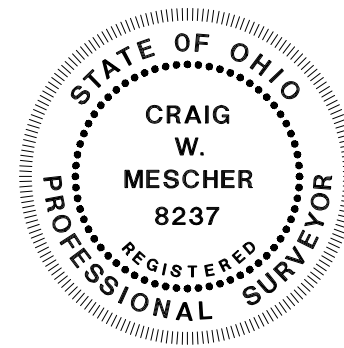


VICINITY MAP

SCALE: 1" = 60'



I hereby certify that this plat is true and accurate to the best of my knowledge by Craig W. Mescher Registered Surveyor No. 8237, on November 6, 2020.



Craig W. Mescher
 Professional Surveyor #8237

PROJECT # 220808.94



1200 IRMSCHER BLVD., SUITE B, CELINA, OH 45822
 www.accessengllc.com | 419-586-1430